

# SYNERGY™

# 1000

The Power of SPC

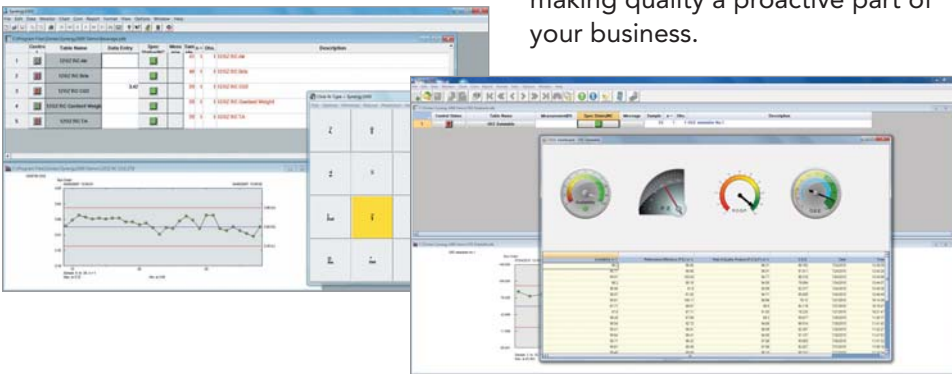
The ZONTEC logo is positioned in the bottom right corner of the page. It features the word "ZONTEC" in a bold, white, sans-serif font, with a trademark symbol (TM) to its upper right. The logo is set against a solid red rectangular background. The overall design of the page is modern and technical, with a color palette of blues, purples, and reds, and abstract geometric shapes and lines.

Real-Time Statistical Process Control Software

# Synergy 1000 – A Superb Product that Enables You to Monitor Quality in Real-Time

*“Our expected Return On Investment (ROI) for purchasing Synergy 1000 was \$16,000. We met our expectations.” said Roth Gonzales of Sahale Snacks.*

Synergy 1000 is the leading real-time Statistical Process Control (SPC) system that combines data collection, charting, monitoring, analysis, communication and reporting – all functions from a single screen. You can create files, enter data, create charts, query samples, and generate reports as fast as you can click a mouse. Synergy 1000 delivers blazing fast performance so your manufacturing team can instantly collaborate making quality a proactive part of your business.



## Rapid Setup and Implementation

Because of its logical design, Synergy 1000 is known for its rapid implementation. The system has design templates so you can easily replicate product information in minutes. This way, users enjoy SPC in real-time and your operators are able to receive immediate feedback about their machines. “Our expected Return On Investment (ROI) for purchasing Synergy 1000 was \$16,000. We met our expectations.” said Roth Gonzales of Sahale Snacks.

## Synergy 1000 System Requirements

Computer processor 1GHz or faster  
1.0 GB RAM  
3.0 GB available disk space  
1024 x 768 or higher resolution monitor  
Client – Microsoft Windows® XP, Windows Vista, Windows 7, 8, 10  
Server – Windows Server 2003 or Windows Server 2008  
Windows compatible printer

## Flexible Data Collection

Since each production environment is unique, Synergy 1000 offers you multiple data entry methods. With its flexible screen design, Synergy 1000 can be tailored to your quality collection process. Faster data collection means you quickly begin acting upon your SPC data and your data is instantly protected.

## Easy Navigation a Click Away

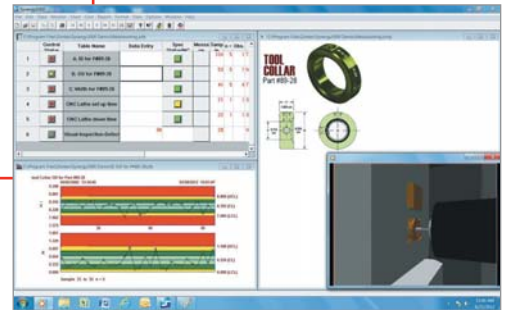
Facilitating instant communication, Synergy 1000 is designed so one click of a mouse accesses the wealth of information available. With a right click, you can access any chart. From the chart or the report you have open, just right click again to instantly email the chart or the report to the appropriate person. This provides immediate communication and a reduction in errors.

## Versatile Interactive Charts

Standard with Synergy 1000 is a wide variety of charts all available at the click of a mouse. For every chart, Synergy 1000 provides color-coded data points so you can immediately see if your process is out-of-control or out-of-specification. You can also simply click on a data point to get more information. All charts are real-time, so you can simultaneously view multiple aspects of your business.

## Sophisticated Analytics and Real-Time Math Calculations

When it comes to sophisticated SPC calculations, Zontec wrote the book and built it in Synergy 1000. You can



perform highly refined historical data queries. In addition to variable data, you can capture attribute data and create instant charts based on assignable causes and corrective actions.

### Instant Extensive Reporting

Synergy 1000 provides an array of reports. Included are standard reports with up to eight charts on one page, specialty process reports, shipping document reports, and reports to meet your specific industry requirements. Also included are robust OEE and KPI Dashboards. You can even add your company logo. Simply preview, print, queue, or email reports when ready. Decision-making data is right at your fingertips.

### Real-Time Collection Automation

For automated data entry, gages and direct input devices are quickly connected using the built-in COM port utility. Through the use of the optional Synergy Multi-function Toolbox or the Dynamic Link Library, Synergy 1000 will seamlessly assimilate with any device in your production environment.

### Why Synergy 1000

Synergy 1000 enables you to monitor your business in real-time at every step in the process. While you are working to reduce scrap, to reduce rework, and to enhance user productivity, you are also gathering valuable production information for future decisions about tool lifecycle management and new business opportunities. Synergy 1000 helps you orchestrate your business, now and for the future.

### The SynergySPC Difference

Since 1983, SynergySPC from Zontec has been providing statistical process control software to industry-leading companies around the globe. Why is SynergySPC different from any other SPC solution?

- It is the most complete SPC. We offer a full suite of SPC software for all needs.
- The ONLY fully compliant SPC; SynergySPC conforms to SPC rules and methodology.
- As the most straight-forward SPC you can quickly define and present process stability and capability like no other solution.
- It is the most powerful and advanced SPC. Windows based and with Windows functionality, SynergySPC is the only truly real-time SPC software.
- You get the best value in SPC software. An economical price with unbelievable value, plus one day training and implementation, and our Investment Retention Program.
- SynergySPC is supported by the most experienced and credible source. We have 30+ years experience building the best SPC software.

### Industrial Leaders Choose SynergySPC

Here is a partial list of customers:

- Abbott Nutrition
- Acme Aerospace
- APS Materials
- Batesville Casket
- Bay Valley Foods
- Brita
- Cessna Aircraft
- Clorox
- Domestic Fastener & Forge
- DRT Mfg. Co
- Foam Design
- Freudenberg
- Gerber Products
- Glad
- J M Huber
- KIK Custom Products
- Lockheed Martin
- MASS Precision
- MET Plastics
- Multicircuits
- Nacco
- Oregon Freeze Dry
- Polymeric
- Portage Plastics Corporation
- Rubbermaid
- Sahale Snacks
- Schoeneck Containers
- Stanley Black & Decker
- Trident Precision Manufacturing
- United Gear & Assembly
- U.S. Playing Card
- Veridiam
- WECO Electrical Connectors

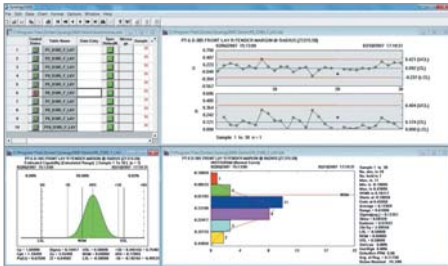
Over 5,000 companies in more than 50 countries benefit from SynergySPC

# Synergy 1000

## Features and Functions

### General Features

- A "Send to Email" command for all reports and charts
- Customizable screen displays
- Detailed e-mail notifications for out-of-control and out-of-specification conditions
- Enhanced toolbar graphics within the program and a startup screen when initially launching the application
- HTML Help
- Immediate on-line access to work instructions, text, PDF and Word documents, BMP and JPG images
- Integrated messaging system with Message Log for communicating online to all users
- Real-time visual status flags for control, specification conditions
- Simple setup for creating part/process files with up to 500 characteristics
- Simultaneous viewing of multiple charts, tables, worksheets
- Video tutorials included with the Synergy 1000 User Manual



### Data Acquisition and Management

- Auto ID prompts user for entry
- Ability to define the default number of ID
- Automatic date/time stamping
- Channel number support for COM settings
- Coded notes
- COM Port Interface for testing gage connections
- Copy/paste function to and from Windows applications
- Data automatically saved to guard against accidental loss
- Data Banks capable of combining variable, attribute and Pareto data
- Data Bank Map
- Data entry via keyboard, on-screen numeric keypad, asynchronous RS-232 devices, USB Interface or other software applications
- Hands-free data collection from gages, scales, CMMs, optical comparators, bar code readers
- Data Log tracks changes/deletions to data
- Data markers reference notes/assignable causes/corrective actions
- Data Table relinking utility
- Define Pareto categories in a single setup window
- Direct import of TXT and CSV files

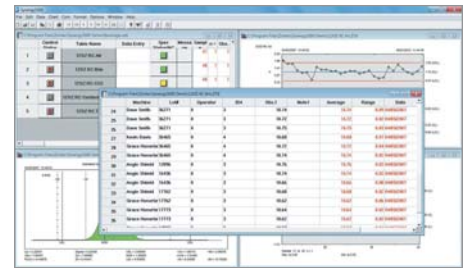
- Easy Data Entry feature
- Gage R & R with scheduling feature
- Data entry from Data Bank Worksheet or Data Table Spreadsheet
- Merge and Trim files
- Note fields applied to newly created Data Tables
- On-screen data entry and charting without switching to separate program modes
- Out-of-control alerts, trend test violations, and out-of-specification warnings
- Pareto Data Entry screen incorporated in the Math Calculator to simplify data entry
- Sample sizes  $n=1$  up to 25
- Single mode math calculator for average, max, min, TIR, OEE Net Weight Delta, and true position
- Template for Data Table setup
- Unlimited Data Tables (characteristic files)
- Unlimited Data Banks (process files)
- Up to (2) Notes columns for logging assignable cause and corrective action
- Up to (12) ID fields with customizable ID column labels
- Variable data input one characteristic at a time or by complete subgroups
- Auto Note feature to prompt user for input at out-of-control or out-of-spec
- Withholding of sample(s) from any calculations

### Charting

- 3 chart
- Automatic scaling of Y-axis on run charts based on specification limits or data values
- Attribute Charts (c, p, np, u, DPMO)
- Box and Whisker chart generated for each observation within a Data Table
- Chart scrolling
- Charting on ranges of data
- Charts update instantly
- Chart viewing individually or in unlimited combination
- Clickable data points & data point sizing controls
- Fonts, sizes and colors easily changed
- Full charting capabilities on query results
- Gage R & R charts (Repeatability range, Part operator average, Part operator plot)
- Moving Average Moving Range Chart
- Nominals Chart for short-run data
- Overlay Charts
- Pareto, Composite Pareto and Notes Pareto Chart
- Rainbow control chart
- Run Chart, overlay run chart, high/low run chart
- Six Sigma Capability for  $C_p$ ,  $C_{pk}$ ,  $P_p$ ,  $P_{pk}$  with distribution curve
- Variable charts (Xbar & R, Xbar & S, Median & R, X & Moving R)
- Vertical and horizontal Histograms with curve fittings

### Calculation and Analysis

- Capability to add ID(s) and/or Note(s) from the control chart



- Capability studies providing calculated capability ( $n$  or  $n-1$ ), estimated capability with or without calculated range
- Change sample size
- Change sample values with or without affecting date and time of entry
- Control limit calculation
- Decimal place definition
- Estimated or calculated sigma for control limit and process capability calculation
- Modifiable specification trend settings
- Non-normal data analysis
- Pareto analysis up to 100 categories per table
- Query by ID fields, notes fields, date and/or time
- Real-time instantaneous trend analysis
- Real-time Notes Pareto
- Short run
- Unilateral or bilateral specifications defined and charted

### Reporting

- Customizable Certificate of Analysis (COA) Report with query function and option to add company logo
- Overall Equipment Effectiveness (OEE) dashboard including Availability, Performance Efficiency (PE), Rate of Quality Product (ROQP)
- Custom configurable report layouts with up to (8) charts per page
- Comprehensive traceability/audit trails for ISO, QS and TS certification
- Key Performance Indicator (KPI) dashboard to assess, track and analyze factors contributing to production efficiency
- One-click Process Information Report
- Print utility for charts, spreadsheets, worksheets, reports and individual windows
- Queue function for printing report groups
- Report save options for Excel, HTML or TXT
- Reports update automatically
- Web-enabled reports and spreadsheets

**ZONTEC™**

**1389 Kemper Meadow Drive  
Cincinnati, OH 45240**

**(513) 648-9695**

**(866) 955-0088 Toll-free**

**www.zontec-spc.com**